

The State of Nevada

Total listed Types and Towns: 77



1.2154

The state is normally abbreviated, NEV., unless listed (Ie: NV)

At this point there are no Types with a PIC Type Note, in the listings.

The following are examples of different styles found from Nevada towns, with type numbers.



1.1543



1.16



2.4214

WINNEMUCCA



2.4243



2.425

CARLIN



2.4274



2.429

ELKO



2.4293



2.46005



2.467005



2.4653



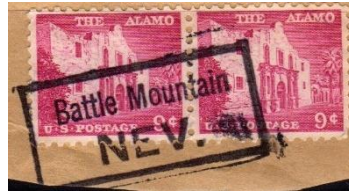
2.4674



2.5614



2.64(5/9)



2.66(44/95)



2.669



4.4274



4.42(14/94)



McGILL

4.4643



7.4642 DLR and another one

NEVADA Jan 1 2019

| Type | Note | Town | Note | Usage |
|-------------|------|--------------------|------|------------------------|
| 2.4563 | | AUSTIN | | 1938 |
| 2.5614 | | BATTLE MOUNTAIN, | | 1932 |
| 2.66(44/94) | | BATTLE MOUNTAIN | | 1954 |
| 2.71 | | BATTLE MOUNTAIN | | 1914 |
| 1.1642 | | BOULDER CITY, | | 1922 |
| 1.5644 | | CALIENTE, | | 1917, 19, 22, 40 |
| 2.46 | CON | CALIENTE, | | 1938 |
| 2.4664 | | CARLIN, | | 1922, 26 |
| 2.469 | | CARLIN, | | 1938 |
| 0.425 | | CARLIN, | | 1917, 26 |
| 2.4663 | | CARSON CITY, | | 1926, 32 |
| 2.64(5/9) | | CRYSTAL BAY | | 1954 |
| 1.1173 | | ELKO, | | 1938 |
| 2.4274 | PRO | ELKO, | | 1929, 38, 40 |
| 2.429 | | ELKO, | | 1912 |
| 7.4254 | SLR | ELY, | | 1917, 22, 23, 25SD, 26 |
| 7.42544 | SLR | ELY, | | 1922, 26, 30, 31, 32 |
| 1.1543 | | ELY, | | 1917 |
| 2.4293 | | ELY, | | 1938, 40, 43 |
| 4.4254 | | EUREKA, | | 1926 |
| 7.4643 | DLR | FALLON | | 1917, 18, 22, 23 |
| 2.460005 | CON | FALLON, / NV | | 1965, 68 |
| 2.421 | | GARDNERVILLE | CQ | 1922 |
| 2.4652 | | GARDNERVILLE, | | 1926, 34 |
| 0.4643 | | GARDNERVILLE | CQ | 1938 |
| 2.4673 | | GARDNERVILLE | CQ | 1931D, 38 |
| 1.1254 | ASA | GOLDFIELD, | | 1917 |
| 1.1644 | | GOLDFIELD, | | 1938, 54 |
| 1.2643 | | GOLDFIELD, | | 1917 |
| 1.2154 | | GOLDFIELD, | | 1908, 14 |
| 2.4664 | ASA | GOLDFIELD / (NEV.) | CQ | 1940 |
| 2.669 | | GOLDFIELD | | 1938 |
| 2.425 | | LAS VEGAS, | | 1922 |
| 2.4614 | | LOVELOCK | | 1922 |
| 4.42(13/93) | | LOVELOCK | | 1917, 22, 23 |
| 2.4694 | | LUNING, | | 1942 |
| 0.4254 | | MCGILL | SMc | 1926 |
| 4.4153 | | MC GILL | | 1926 |
| 4.4644 | CON | MCGILL | SMc | 1917, 22 |
| 2.469 | | MCGILL, | SMc | 1917 |
| 2.4293 | | MINDEN | CQ | 1938 |

| | | | | |
|-----------|-----|-------------------|----|--------------|
| 2.4653 | | MINDEN, | | 1938, 47, 51 |
| 2.4293 | | PIOCHE, | | 1940 |
| 2.4694 | | PIOCHE | | 1938 |
| 0.4644 | | RENO | | 1922 |
| 1.1253 | | RENO, | | 1914 |
| 1.1553 | | RENO, | | 1917D, 22 |
| 1.16 | | RENO, | | 1917DOC, 19 |
| 2.46 | CON | RENO, | | 1954 |
| 2.4674 | | RENO, | | 1954, 61 |
| 7.46644 | SLR | RENO | | 1908 |
| 2.46642 | | RUTH, | | 1926 |
| 0.45004 | | RUTH | | 1938 |
| 4.4274 | | RUTH | | 1926, 32 |
| 2.425 | | RUTH, | | 1922 |
| 2.44(5/9) | | SPARKS | CQ | 1938 |
| 2.46 | | SPARKS, | | 1938, 54 |
| 2.4646 | | SPARKS, | | 1938 |
| 2.465 | | SPARKS, | | 1917 |
| 2.559 | | SPARKS | | 1938 |
| 2.64(5/9) | | SPARKS | | 1938, 54 |
| 2.669 | | SPARKS | | 1938, 44 |
| 7.4642 | DLR | SPARKS | | 1917 |
| 2.46 | CON | TONOPAH, | | 1954 |
| 2.421 | | VIRGINIA CITY | CQ | 1912 |
| 2.4243 | | VIRGINIA CITY, | | 1926, 38, 40 |
| 2.46 | CON | VIRGINIA CITY, | | 1954 |
| 1.4643 | | WELLS | | 1938 |
| 1.1543 | | WELLS, | | 1938 |
| 1.2162 | | WILKINS, | | 1938 |
| 2.4214 | | WINNEMUCCA | CQ | 1914 |
| 1.1643 | | WINNEMUCCA, | | 1926, 31 |
| 1.4644 | | WINNEMUCCA, | | 1926 |
| 2.4644 | | YERRINGTON, | | 1912 |
| 2.46 | | YERRINGTON, | | 1917 |
| 2.64(5/9) | | YERRINGTON | | 1938 |
| 2.460005 | | ZEPHYR COVE, / NV | | 1973 |